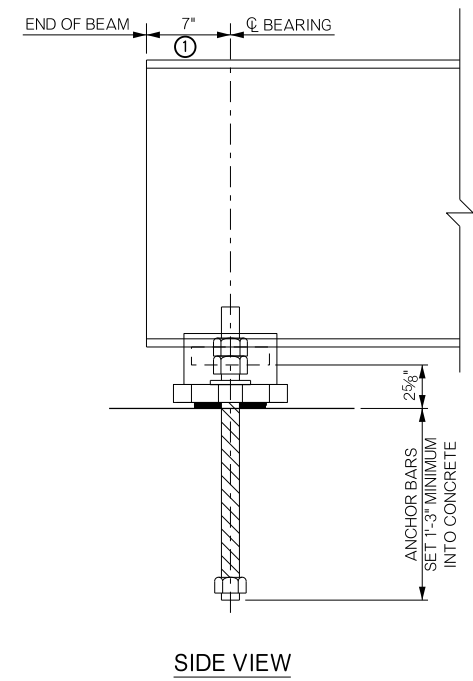
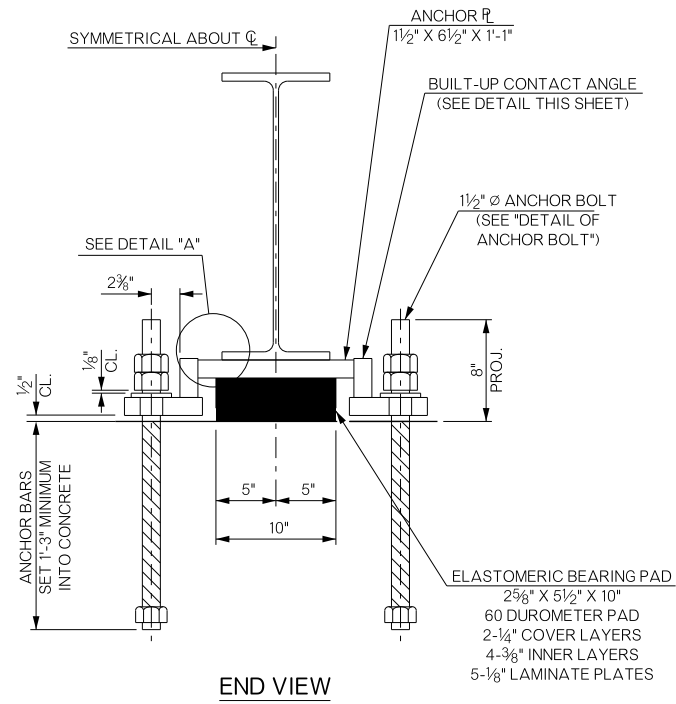
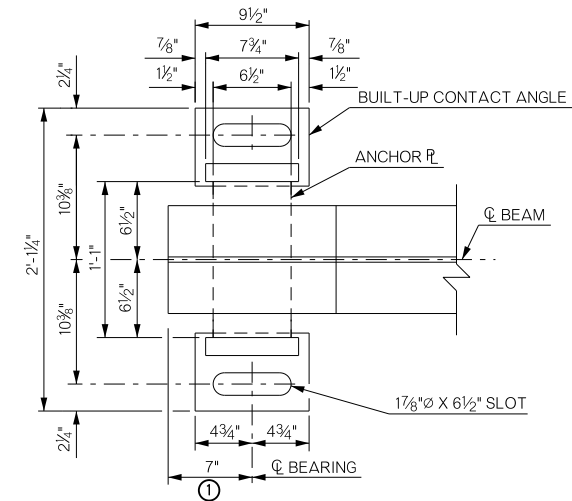


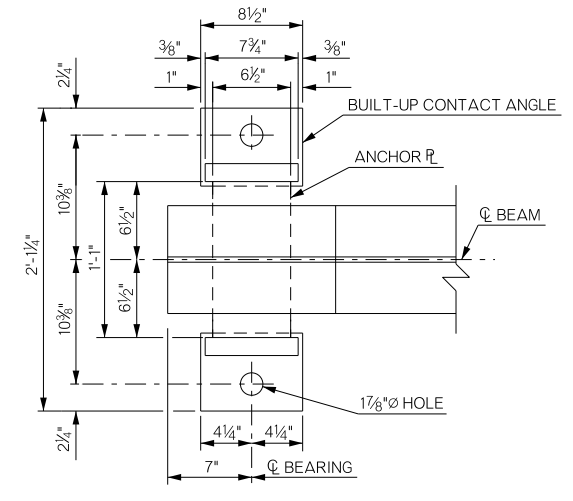
REVISIONS		
REV. NO.	DESCRIPTION	DATE



**BEARING DETAILS**



**EXPANSION BEARING PLAN**

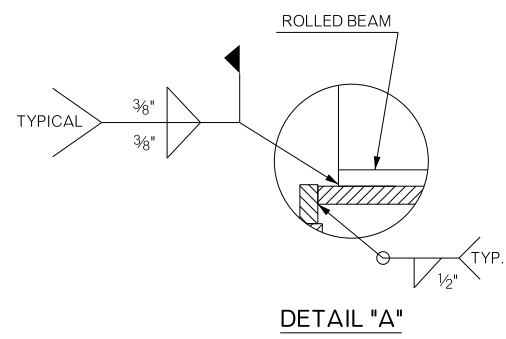


**FIXED BEARING PLAN**

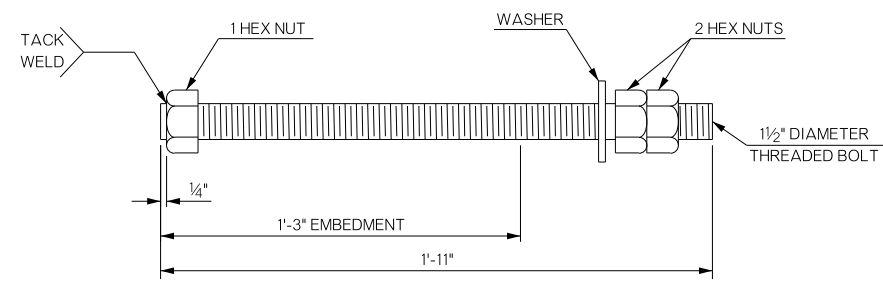
① CENTER ANCHOR BOLTS IN SLOTS DURING SETTING OF BEAMS. DIMENSION MAY VARY DEPENDING ON TEMPERATURE AT THE TIME OF BEAM SETTING.

**BEARING ASSEMBLY NOTES:**

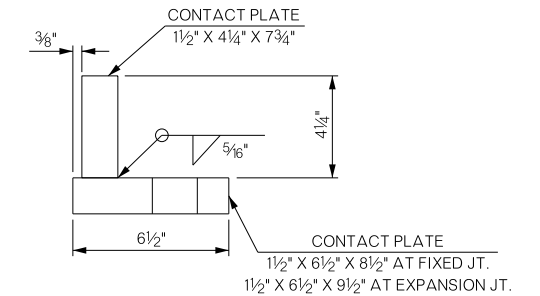
PROVIDE STRUCTURAL STEEL FOR ANCHOR PLATES AND BUILT-UP CONTACT ANGLES IN ACCORDANCE WITH ASTM A240 (AUSTENITIC STAINLESS STEEL, TYPE 316, CHARPY V-NOTCH TESTING NOT REQUIRED). FOR ANCHOR BOLTS, PROVIDE CONTINUOUSLY THREADED BARS IN ACCORDANCE WITH ASTM A320, CLASS 2, GRADE B8M (AUSTENITIC STAINLESS STEEL, TYPE 316, CHARPY V-NOTCH TESTING NOT REQUIRED). USE AUSTENITIC STAINLESS STEEL NUTS AND WASHERS CONFORMING TO ASTM A194, GRADE 8M AND ASTM A320, RESPECTIVELY. PERFORM ALL WELDING CONSISTENT WITH PROCEDURES FOR STAINLESS STEEL.



**DETAIL "A"**



**ANCHOR BOLT DETAIL**



**BUILT-UP CONTACT ANGLE DETAIL**

BRIDGE "A" SH-78 OVER CHUCKWA CREEK	BRYAN COUNTY	Design	CJO	6/15
BEARING DETAILS		Detail	DPG	8/15
		Check	TEE	9/15
STATE OF OKLAHOMA		Squad	HENSLLEY	
DEPARTMENT OF TRANSPORTATION		Engr:	DEFRANCO	
JOB/PIECE NO. 27912(04)	SHEET NO. B023			